

# Zipper Solutions

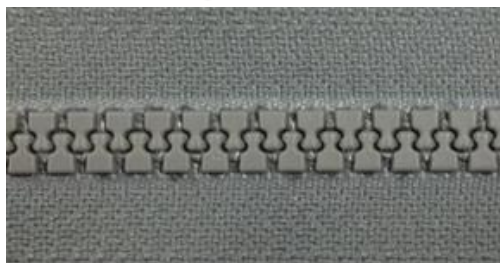
- IEF (Individual Element Fastener)  
MF-Metal Formed



- CEF (Continuous Element Fastener)  
CF-Coiled Plastic Monofilament



- IEF (Individual Element Fastener)  
VF-Plastic Injection



Commercial Item  
Description Zippers  
AA-55634A



Type I  
Style 4

**Closed Bottom (C)**



Type III  
Style 8

**Separating/Open (O)**



Type III  
Style 13

**Two-way Separating (M)**



Type I  
Style 16

**Closed Bottom Head to Head (HHB2)**



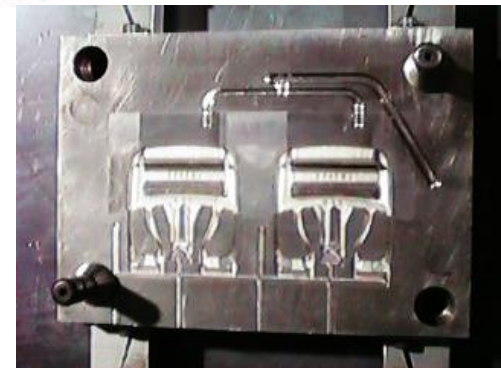
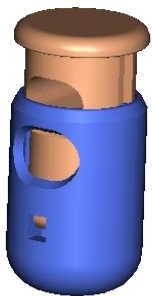
Type I  
Style 10

**Closed Back to Back (BBT2)**

# Plastic Parts

**YKK**  
*Little Parts. Big Difference.®*

- Buckle
- Snap Hook
- Adjustors
- Cord Stoppers
- D-Ring



# Webbing

**Woven Narrow Fabric - fabric 12" or less in width with finished selvages**



MOLLE Packs



Ribbon & tapes



MOLLE & Armor



Belting & Strapping



Tents / Shelters



MIL Spec Webbing:

MIL-T-5038

MIL-T-43566

MIL-W-43668 / A-A-55301

MIL-W-44049

MIL-W-5665

MIL-W-530

MIL-W-4088

MIL-W-27265

MIL-W-17337

MIL-W-5625

MIL-W-5661





# Style 2 Products

## MS 27980-STYLE 2-SK50

JC9-0000-906  
SK50 Snaptop (1B)



X24-0000-359  
SK50 Socket (6B)



K87-0000-359  
SK50 Stud (7B)



J38-0000-359  
SK50 Post (8B)



M83-0000-359  
SK50 Post Long



J50-0000-906  
SK50 Gypsy Stud



## MS 27981-STYLE 2A-SK30

E50-0000-906  
SK30 Snaptop (1B)



D61-0000-359  
SK30 Socket (3B)



D59-0000--359  
SK30 Stud (4B)



L30-0000-359  
SK30 Post (5B)



W44-0000-359  
SK30 Socket Hvy  
Tens



M63-0000-359  
SK30 Blind Post



A post style product is not made for woven applications.

YKK offers solutions & advantages to problems caused by a post style product.

## SX 2-Prong Fastening System



The product has two prongs instead of a hollow post/eyelet.



# SX Advantage

**1. Minimal Fabric Damage:** The two prongs penetrate between the weave without damaging the weave. If the product is misplaced, it can be removed, and replaced without scrapping the garment.

**Advantage**



**2. Prevents Rotation & Button Holing:** The two prongs prevent the product from spinning, and button holing. Button holing is when the weave starts to unravel, causing the product to become loose.

**Disadvantage**



**3. SKU Consolidation:** The cap, and fastener are interchangeable with multiple product lines.

**Advantage**



**Disadvantage**



**4. Better Seal for Water Resistance:** The two prong style doesn't have a hole through the center, or damage the fabric like a single post alternative

**Advantage**



**Disadvantage**



**5. Self Piercing:** Eliminates the need to pre-punch, or burn a hole through the material.

**Advantage**



**Disadvantage**

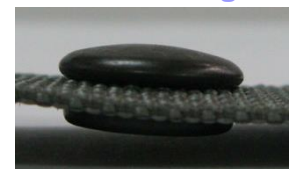


**6. Profile:** The two prong has a low rounded profile to prevent skin irritation.

**Advantage**



**Disadvantage**



**7. Easy Inspection:** The attachment for the two prong product is either good, or bad – with nothing in between. If the prongs are curled over it's a good attachment, anything else is not. On a post style product you can have a good curl, but still have an issue with post squatting. Squatting of the post cause hair line fractures, which may cause the product to fail at any time.

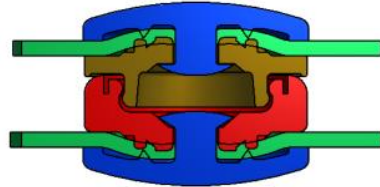
**Advantage**



**Disadvantage**



# SP100 (All plastic alternative to metal hardware)



- 61% less weight than comparable metal components
- 100% pigmented plastic (no brass to show through finish)
- Low profile and smooth contour
- Non-corrosive
- Quiet! No ring to rattle
- Consistent snap action
- Self piercing
- Made in the USA



Compatible with Style 2 Metal Hardware

## ■ Type I Fastener: Non-separating (zipper)/Nonreversible (slider)

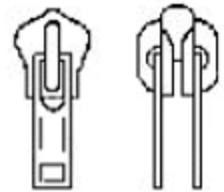
Style	Slider Lock	Top Stop	Bottom Stop	Slider Arrangement
1	Pin or cam	No stops	No Stops	Single
2	Automatic			
3	Non lock			
4	Automatic	Top stops	Bottom stop	
5	Pin or cam			
6	Non lock			
7	Automatic	Bridge stop	Bottom stop	
8	Pin or cam			
9	Non lock			Multiple (back to back)
10	Automatic	Top stops	Top stops	
11	Pin or cam			
12	Non lock			
13	Automatic	Top stops	Bridge stop	
14	Pin or cam			
15	Non lock			
16	Automatic	Bridge stop	Bridge stop	
17	Pin or cam			
18	Non lock			Multiple (head to head)
19	Automatic	Bottom stop	Bottom stop	
20	Pin or cam			





## ■ Type II Fastener: Non-separating (zipper)/Reversible (slider)

Style	Slider Lock	Top Stop	Bottom Stop	Slider Arrangement
1	Without lock	Top stops	Closed	Single
2	Automatic			
3	Without lock	Bridge stop	Closed	
4	Automatic			
5	Without lock	Top stops	Top stops	Multiple (back to back)
6	Without lock	Bridge stop	Bridge stop	
7	Without lock	Closed	Closed	Multiple (head to head)



REVERSABLE  
DOUBLE PULL





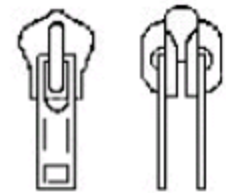
## ■ Type III Fastener: Separating (zipper)/Nonreversible (slider)

Style	Slider Lock	Top Stop	Bottom Stop	Slider Arrangement
1	Without	Top stops	Right hand separating unit	Single
2			Left hand separating unit	
3	Without	Top stops	Right hand separating unit	
4			Left hand separating unit	
5	Automatic	Right hand quick release	Right hand separating unit	
6	Automatic	Left hand quick release	Left hand separating unit	
7	Automatic		Right hand separating unit	
7A	For Anti-Gravity Clothing use		Left hand separating unit	
8	Automatic		Right hand separating unit	
8A	For Anti-Gravity Clothing use		Left hand separating unit	
9	Without	Right hand quick release	Right hand separating unit	Multiple (two-way)
10	Without	Left hand quick release	Left hand separating unit	
11	Automatic	Right hand quick release	Right hand separating unit	
12	Automatic	Left hand quick release	Left hand separating unit	
13	Automatic	Top stops	Left hand separating unit	Multiple (head to head)
14	Automatic	Top stops	Right hand separating unit	
15	Automatic	Left hand quick release	Right hand separating unit	Multiple (head to head)
16	Without	Left hand quick release	Right hand separating unit	



## ■ Type IV Fastener: Separating (zipper)/Reversible (slider)

Style	Slider Lock	Top Stop	Bottom Stop	Slider Arrangement
1	Without lock	Top stops	Right hand separating unit	Single
2	Without lock	Top stops	Left hand separating unit	
3	Without lock	Right hand quick release	Right hand separating unit	
4	Without lock	Left hand quick release	Left hand separating unit	
5	Automatic	Top stops	Right hand separating unit	Multiple (two-way)
6	Automatic	Top stops	Left hand separating unit	



REVERSABLE  
DOUBLE PULL